



2018-2019 FIA FORMULA E - ROUND 1 SAUDI ARABIA

Date: 14/12/2018

Time: 16:00

Driver's & Team Manager's Briefing

Document:

From: The FIA Formula E Championship Race Director
To: All drivers & Competitors
Cc: The Stewards of the Meeting
The Clerk of the Course
The Secretary of the Meeting

DRIVERS BRIEFING

Based on timetable	# 2
<u>Details for the Race</u>	
Pits Open:	14.23
Pits Close:	14.33
Start of the Race:	15.03 (Grid Positioning)

1 EVENT NOTES

- 1.1 The Control/Finish line, which is used for timing purposes, is located just after the pit entry with the flag station on **Drivers LEFT. The Start line is offset 595m from the Control/Finish line**
- 1.2 The entry to the pits is on the **LHS after T19. The Dashed line will not be policed.** The pit lane begins at the speed limit sign and ends at the at the pit exit lights. A speed limit of **50 km/h maximum** will be enforced in the pit lane at all times.
- 1.3 When leaving the pit lane, drivers must not cross the **white/blue/white pit exit line** from **LHS to RHS** and be aware of cars on the track.
- 1.4 A Blue Light will be positioned to the **Driver's RHS** at pit exit, this will warn Drivers leaving the pits of others cars approaching on the track. **A Pit Exit repeater light is also located on Driver's RHS.**
- 1.5 A Driver who abandons a car must leave it in neutral with the steering wheel in place & with the DRIVER MASTER SWITCH in the OFF position.
- 1.6 Orange markings/boards on the wall indicate openings that are big enough to accommodate a car. Drivers must use these openings whenever possible. Emergency windows in the debris fences, which allow Drivers to leave the track, are shown with green exit signs.
- 1.7 All around the circuit you will find small boards with an "F". These indicate the presence of a Fire Marshal post.

1.8 Race distance: 45 minutes elapsed + 1 lap, GP Start, Pole Position on the LHS

- 1.9 After the chequered flag for the Race has been shown all cars must proceed directly to their pit garage in parc fermé conditions, except the first 3 cars, these cars must stop in front of the FIA garage. The Drivers must proceed directly to the podium ceremony with overalls still worn.
- 1.10 After qualifying the cars will move to the FIA garage first and must follow the instructions of the technical delegate. Once released from the FIA garage the cars must be parked under parc fermé conditions in the inner lane in front of their pit garage.
- 1.11 Practice starts may be carried out on the track at the end of each Practice session. Any car on the track when the Chequered Flag is shown may then instead of entering the pits, **proceed directly to the grid** and make a practice start.
- 1.12 All Drivers carrying out a practice start should wait for others to carry out a practice start before moving into a grid position. Under no circumstances should a driver make a practice start if another car is still stationary in front of him on the same side of the grid.
- 1.13 At the beginning (within the first 5 minutes) of the first Practice, a Full Course Yellow (FCY) simulation will occur. The FCY will last approximately 45 seconds.
- 1.14 During Qualifying, the Super Pole and the Race, the Blue Flag on the Dashboard has the same meaning as a blue Flag on the track as displayed by the marshals and therefore is mandatory.

2 QUALIFYING AND SUPER POLE

- 2.1 The Drivers taking part in the super pole will be allowed to enter their car 5 minutes before the start of the Super Pole.
- 2.2 The 1st Driver in the Super Pole may enter the fast lane 5 minutes before the Super Pole session begins
- 2.3 Any Driver taking part (except for the 1st driver) in the Super Pole may enter the fast lane and proceed to the pit exit line, when the previous car has left the pit lane, under the supervision of the marshals.
- 2.4 Drivers are advised to set a minimum lap time on their “In-Lap” no less than 120% from their best lap time set in the Super Pole or Qualifying.
- 2.5 If any Driver causes the Session to stop (Red Flag) or neutralizes the session (FCY) the best lap time of the driver concerned may be cancelled.

3 FULL COURSE YELLOW

- 3.1 There will be 5-second countdown by radio from Race Control to Drivers and teams. When the countdown is at 0, the boards and flags will be shown on the track. The maximum time to reduce speed to 50 km/h is 5 seconds.



- 3.2 There will be also a 5-second countdown from FCY back to Green Flag.
- 3.3 Only the speed (not the distance between the cars) will be policed by race control.
- 3.4 Upon the Race Directors instruction, a “pack-up” may be formed behind the leader.

4 TRACK – Not Applicable

5 THE RACE

- 5.1 There will be a grand prix start. The light signals are located in the middle of the track on the gantry. An “F1 start light system” will be used. Move from the “dummy grid” into grid positions when the green lights illuminate. When all cars are in their position, the green lights will be switched off and after approximately 10 seconds the red starting lights will be illuminated one by one. The start will be given by extinguishing all the red lights.
- 5.2 If a car has stalled on the grid and the start must be aborted, this procedure will happen:
- 5.3 Yellow/amber flashing abort lights together with a “START DELAYED” board will be shown.
- 5.4 Keep your car ready to move.
- 5.5 **The Marshals will place any stalled cars in a safe location.**
- 5.6 When the abort lights will be switched OFF, the starting lights sequence will start a minimum of 15 seconds later. In addition, there will be information from the Race Director about the delay and further information 20 seconds before the restart by radio.
- 5.7 Suspending a Race – Red flag situation:

When the order is given to suspend the Race, a Red flag will be shown at all Marshal posts and the abort lights to be shown at the Line.

Overtaking is forbidden, and the pit exit will be closed.

All cars must proceed slowly to the entry of the pit lane. The first car to arrive in the pit lane should proceed directly to the pit exit and stop at the pit exit light, staying in the fast lane; all other cars should form up in a line behind the first car.

The safety car will then be driven to the front of the line of cars.

The re-start of the Race will start be announced on the timing monitor. In all cases, at least a 10-minute warning will be given.

6 ATTACK MODE

- 6.1 **Exit Drivers Right T17**
- 6.2 **Forbidden to Arm/Activate in the first 2 laps.**
- 6.3 **May be Armed/Activated during FCY/Safety Car**
- 6.4 **Keep in mind Zero Lap**
- 6.5 **Drive Though (equivalent time penalty) for not Activating the mandatory number of times**

7 SAFETY CAR

- 7.1 The Safety Car may be brought into operation to neutralize the Race. You are reminded that you may only leave the pits under the Safety Car procedure when the pit exit light is green.
- 7.2 Under certain circumstances the Safety Car may use the pit lane if, for example, the track is blocked between the pit entry and the pit exit. Therefore, if the Safety Car enters the pit lane and the lights remain on, drivers must follow it into the pits.
- 7.3 **All competing cars must form up in line behind the Safety Car no more than 10 car lengths apart and overtaking is forbidden.** When the Race Director calls in the Safety Car, it must extinguish its yellow/orange lights, which will be the signal to the Drivers that it will be entering the pit lane at the end of that lap.
- 7.4 The last point where the yellow/orange lights will be switched off is between **Turn 15**.
- 7.5 No overtaking is allowed before the Control/Finish Line.

8 LEAVING THE TRACK

- 8.1 Competitors are reminded of Chapter IV of Appendix "L" of the International Sporting Code – The Code of Conduct on Circuits. All drivers are advised to read this.
- 8.2 **For this Event the concrete walls are considered the "track limits".**
- 8.3 Anyone leaving the circuit and rejoining in a dangerous manner, causing another competitor to change his line/direction or hitting another competitor will be reported to the Stewards.

9 REPEATED CHANGE OF DIRECTION

- 9.1 Change of direction during Non-Qualifying Practice, Qualifying or the Race to prevent another car from overtaking will be reported to the Stewards. Only one change of direction is permissible. (Chapter IV of Appendix "L" of the International Sporting Code)



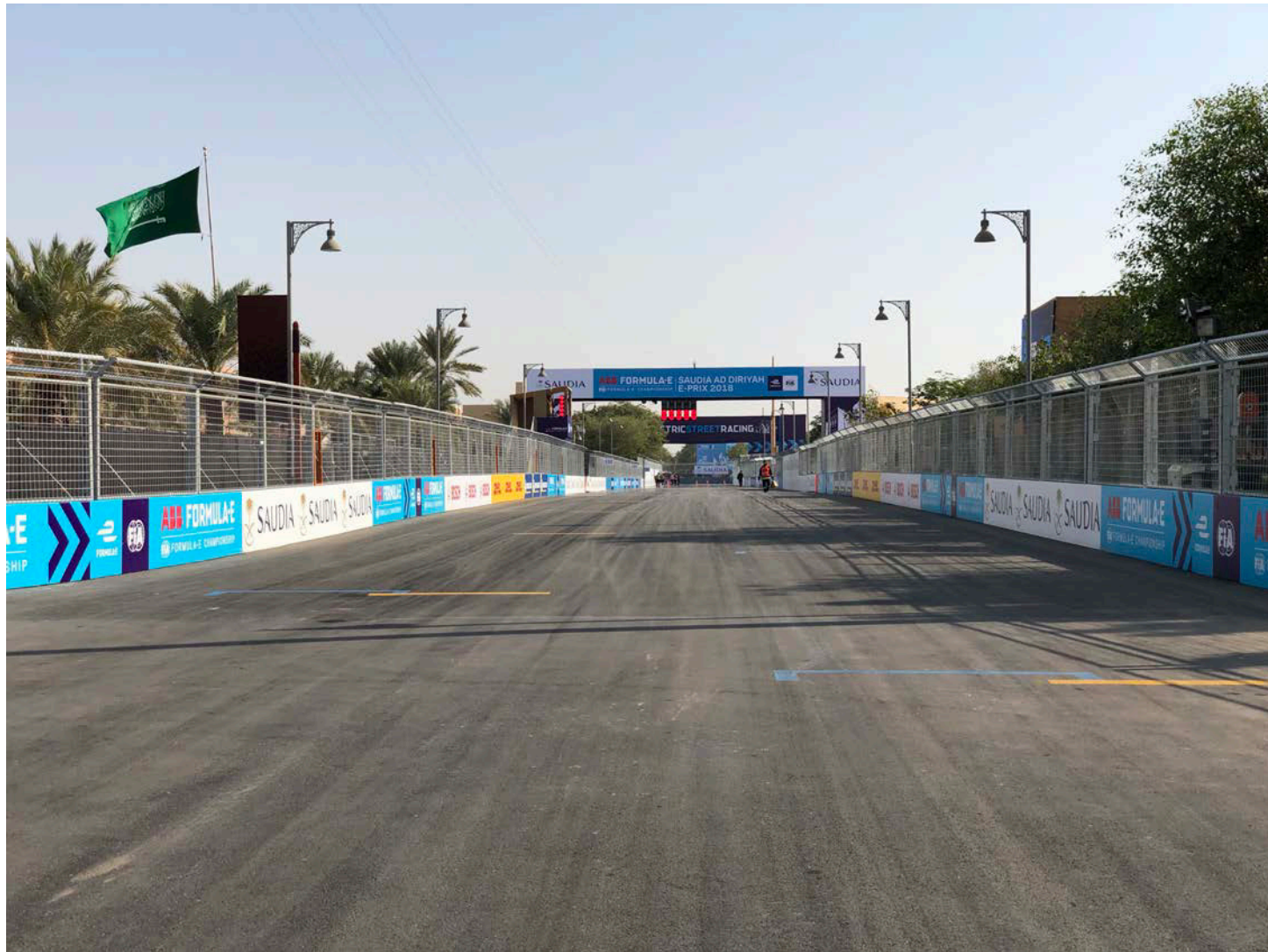
Scot E Elkins
FIA Formula E Championship Race Director

Round 1 Saudi Arabia – Drivers briefing

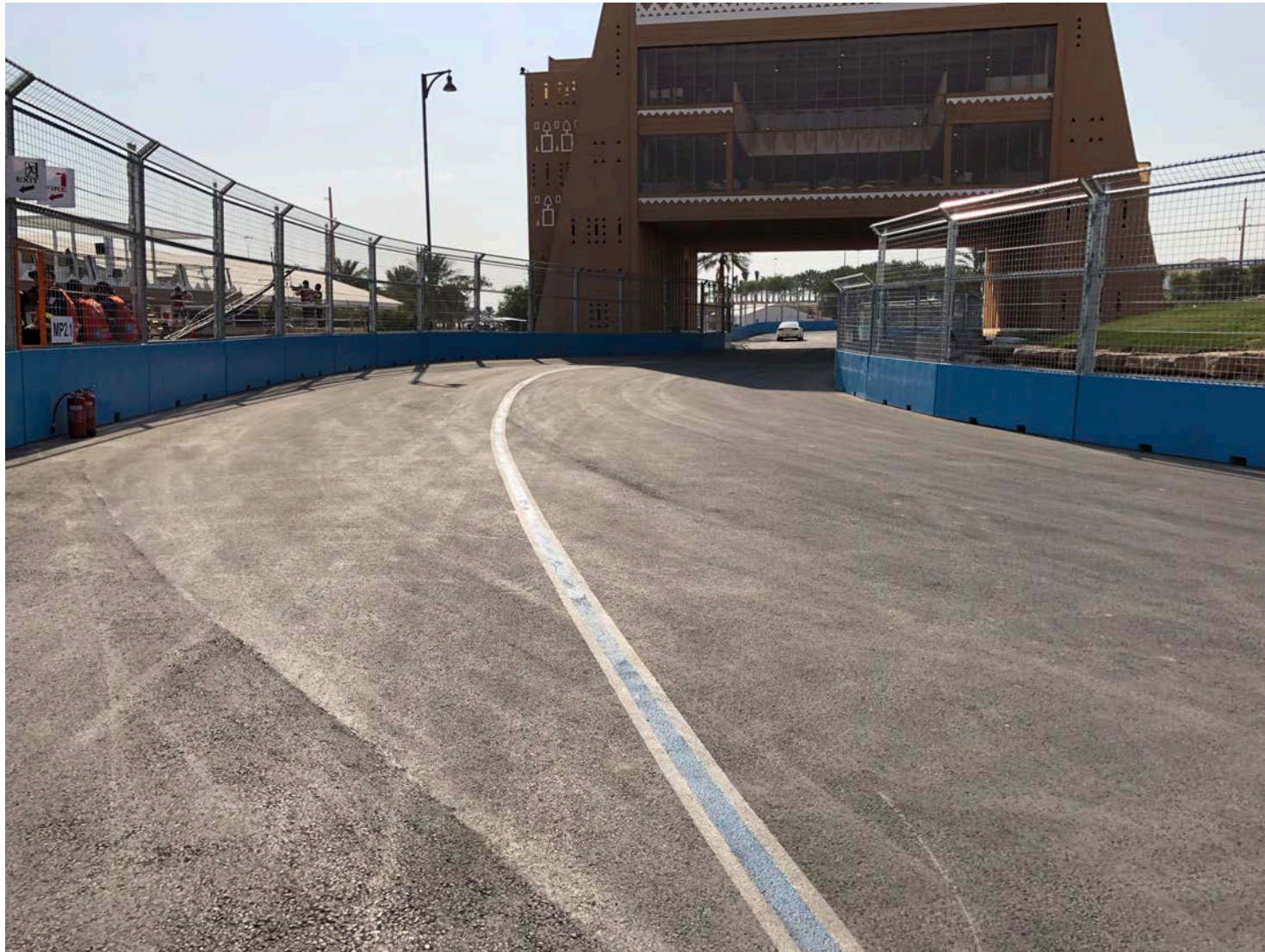
Pit Entry



Start Lights



Pit exit



Attack Zone



Qualifying

Round 1 - Ad Diriyah ePRIX - 15 Dec 2018

Group 1

25	Jean-Eric Vergne
11	Lucas di Grassi
2	Sam Bird
23	Sébastien Buemi
66	Daniel Abt

Group 2

94	Felix Rosenqvist
20	Mitch Evans
36	André Lotterer
3	Nelson Piquet
16	Oliver Turvey

Group 3

48	Edoardo Mortara
64	Jérôme d'Ambrosio
28	Antonio Felix da Costa
7	José Maria Lopez
8	Tom Dillmann
4	Robin Frijns

Group 4

5	Stoffel Vandoorne
6	Maximilian Günther
17	Gary Paffett
19	Felipe Massa
22	Oliver Rowland
27	Alexander Sims